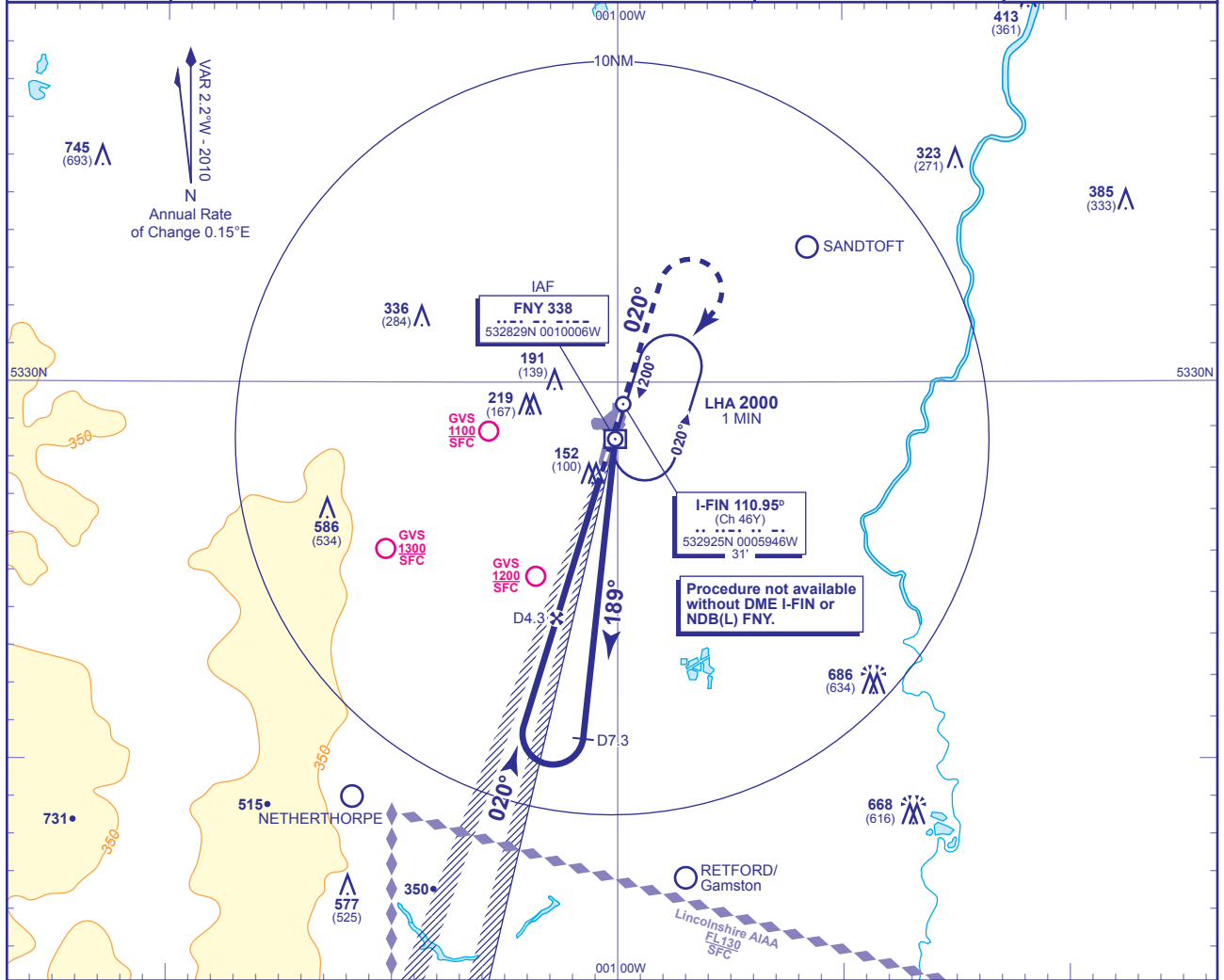


**INSTRUMENT APPROACH CHART - ICAO**

**DONCASTER SHEFFIELD**

**ILS/DME Z  
RWY 02**  
(ACFT CAT A,B)

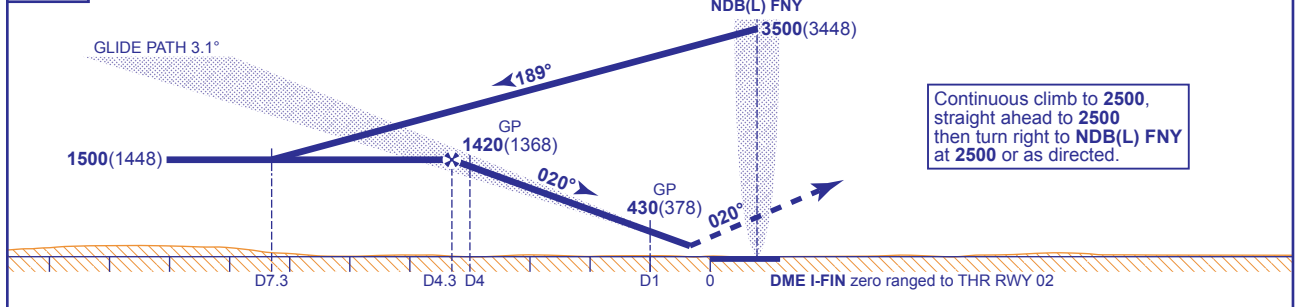
	APP 126.225	DONCASTER APPROACH	AD ELEVATION <b>55</b>
	TWR 128.775	DONCASTER TOWER	THR ELEVATION <b>52</b>
	RAD 126.225, 129.050	DONCASTER RADAR	OBSTACLE ELEVATION <b>745 AMSL</b> (693) (ABOVE THR)
	ATIS 134.950	DONCASTER INFORMATION	BEARINGS ARE MAGNETIC
			TRANSITION ALTITUDE <b>5000</b>



RECOMMENDED PROFILE GLIDE PATH 3.1°, 325FT/NM

DME I-FIN	4	3	2	1
ALT(HGT)	1420(1368)	1090(1038)	760(708)	430(378)

**RDH 53** Arrival not below 3500.



Aircraft Category		A	B	Rate of descent FT/MIN	G/S KT	160	140	120	100	80
OCA (OCH)	CAT I	216(164)	224(172)		870	760	650	540	430	
VM(C)OCA (OCH AAL)	Total Area	480(425)	520(465)							

**NOTE 1** Aircraft will normally be required to hold not lower than 3500. Lowest altitude to commence procedure from hold after missed approach is 2500.  
**NOTE 2** CAUTION: Pilots of inbound traffic to note proximity of Retford/Gamston, Netherthorpe and Sandtoft aerodromes to instrument approach procedures.

CHANGE: MAG VAR. MINIMA. NOTES. TITLE.

AERO INFO DATE 21 JUN 10